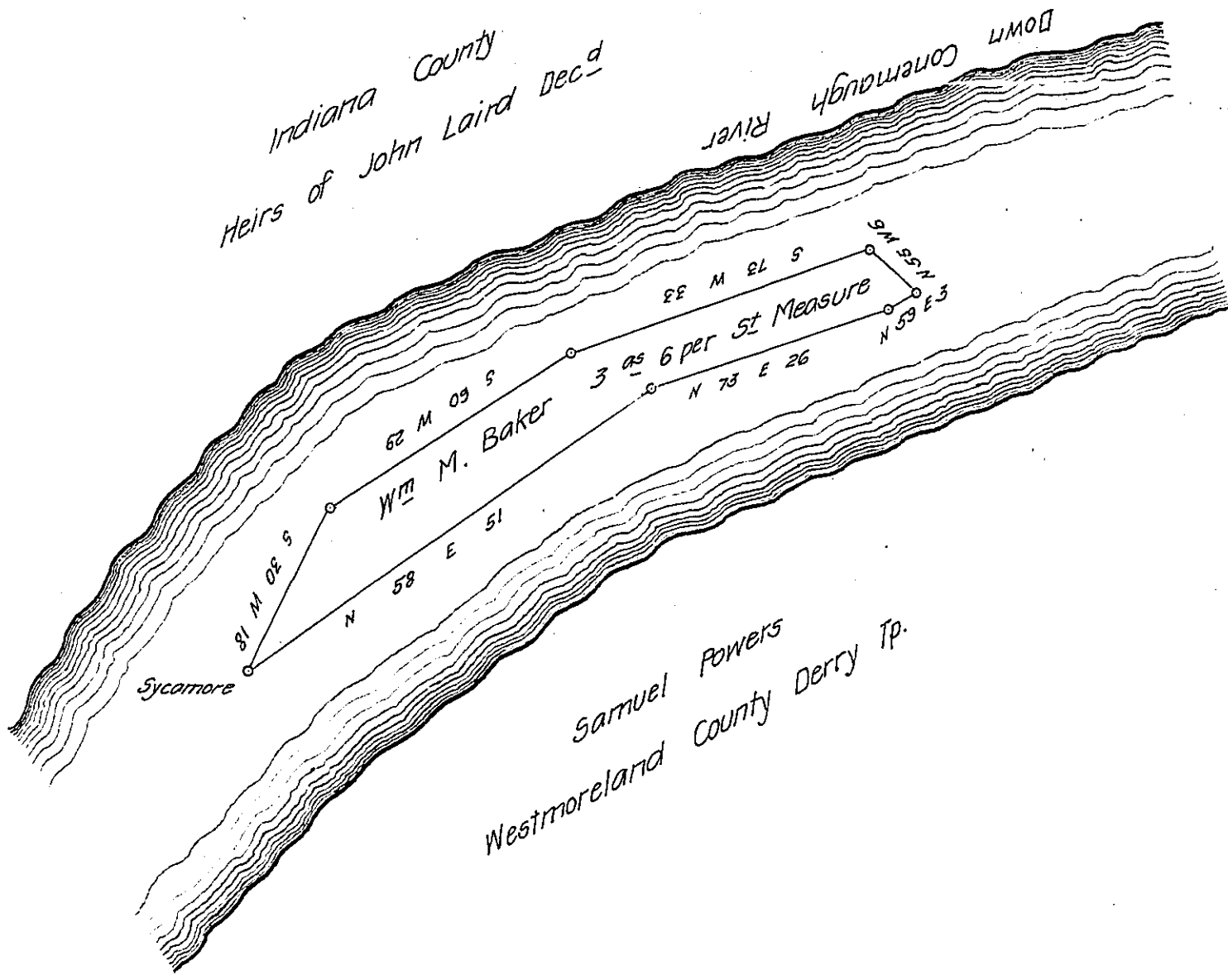


FORM NO. 1.



Surveyed the above described Island containing three acres & six perches  
 Strict Measure Situate in the Conemaugh River on the line of Indiana & Westmoreland  
 County On the 25<sup>th</sup> day of April A.D. 1865 for which the Board of Property of Penn<sup>a</sup> Issued  
 an Order for the Valuation thereof dated March the 28<sup>th</sup> 1865 Unto Wm M. Baker who  
 has since obtained a warrant for the same dated November 6<sup>th</sup> A.D. 1865 on which  
 warrant and Survey I return the same to the land Office of Penn<sup>a</sup>

A. M. Altman C.S.

To James P. Barr Esq.

Surveyor General of Pa.

IN TESTIMONY that the above is a copy of the original remaining on file in  
 the Department of Internal Affairs of Pennsylvania, made  
 conformably to an Act of Assembly approved the 16th day of  
 February 1833, I have hereunto set my hand and caused  
 the Seal of said Department to be affixed at Harrisburg,  
 this eighteenth day of January 1908

*Henry Houch*  
 Secretary of Internal Affairs.

Westmoreland & Indiana Counties